

Schéma d'une bactérie

583 x 441= x257 103

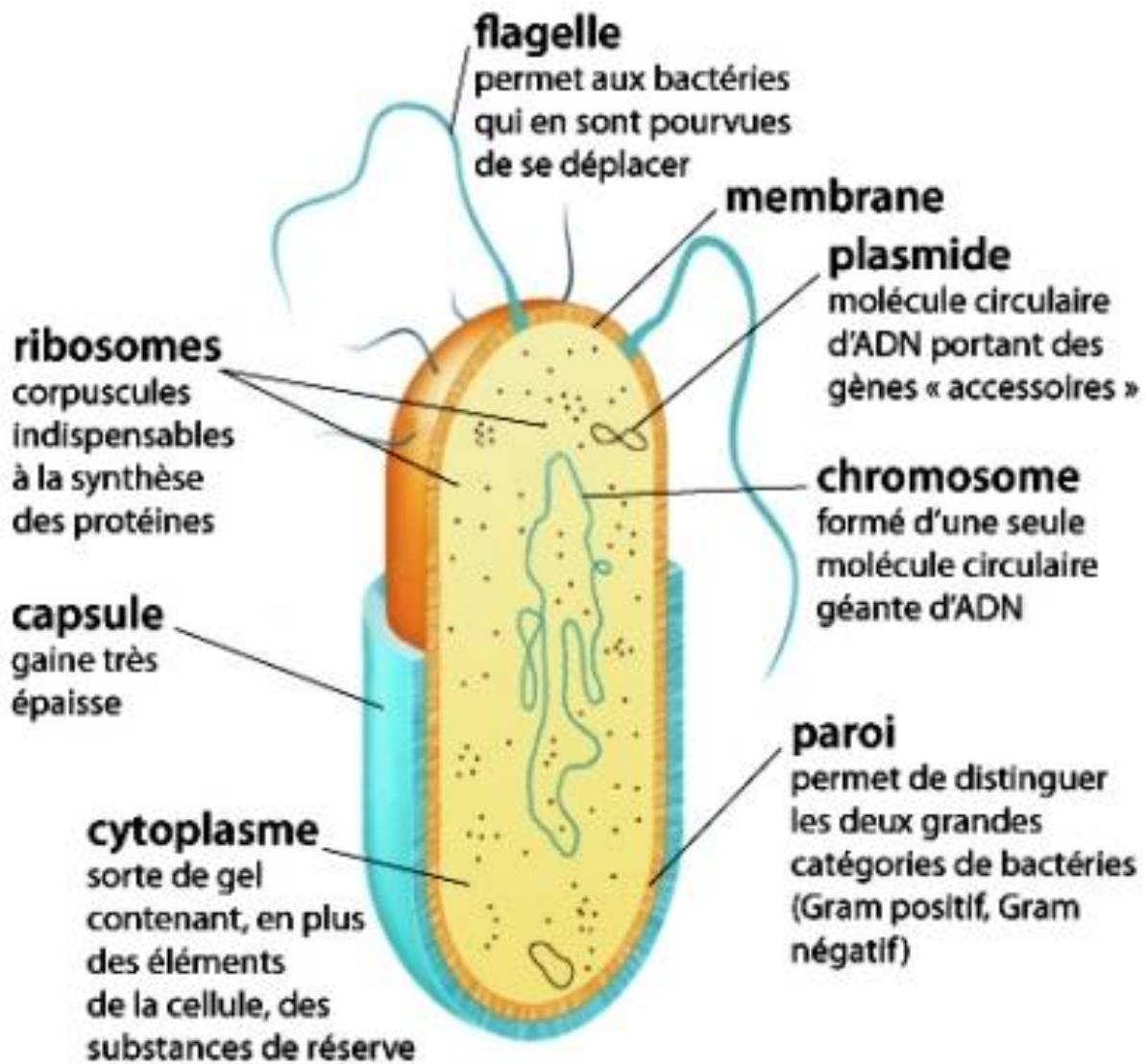


Schéma d'une bactérie

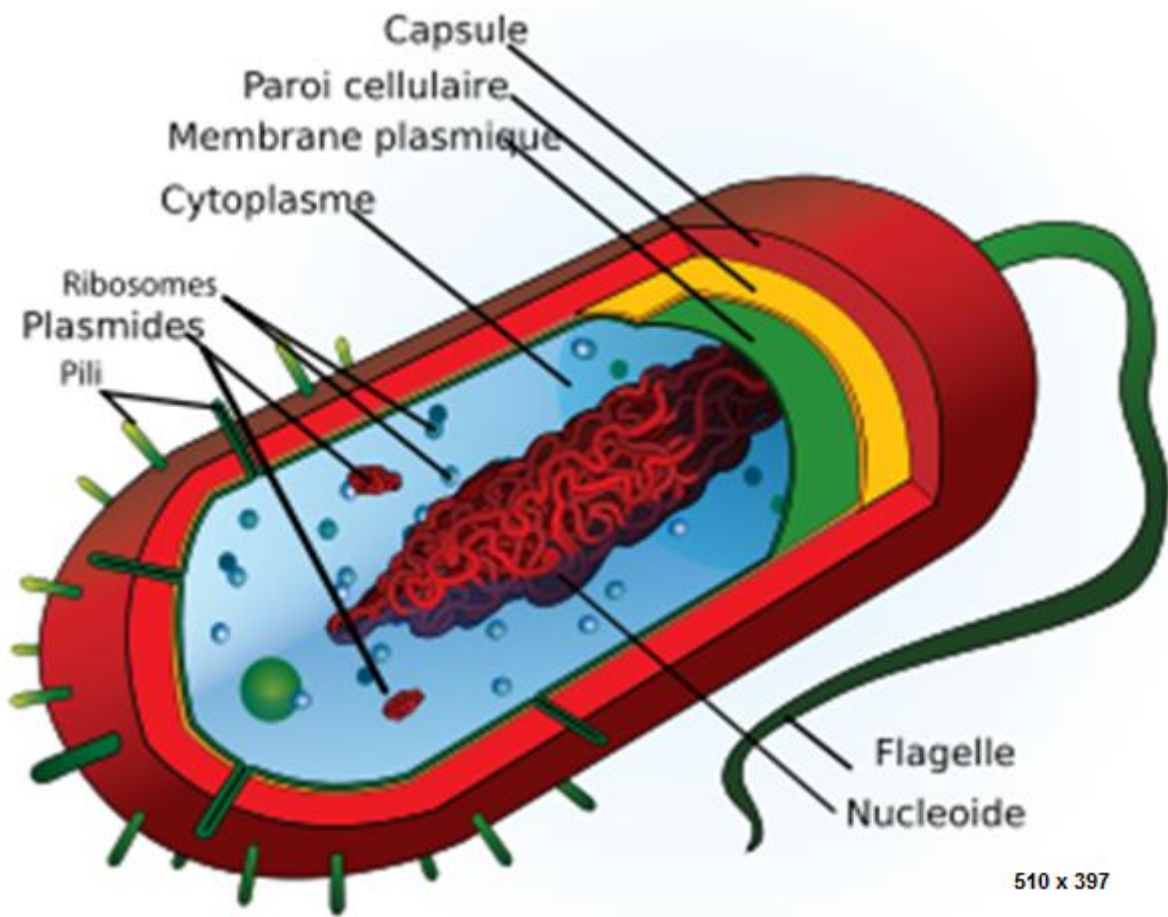
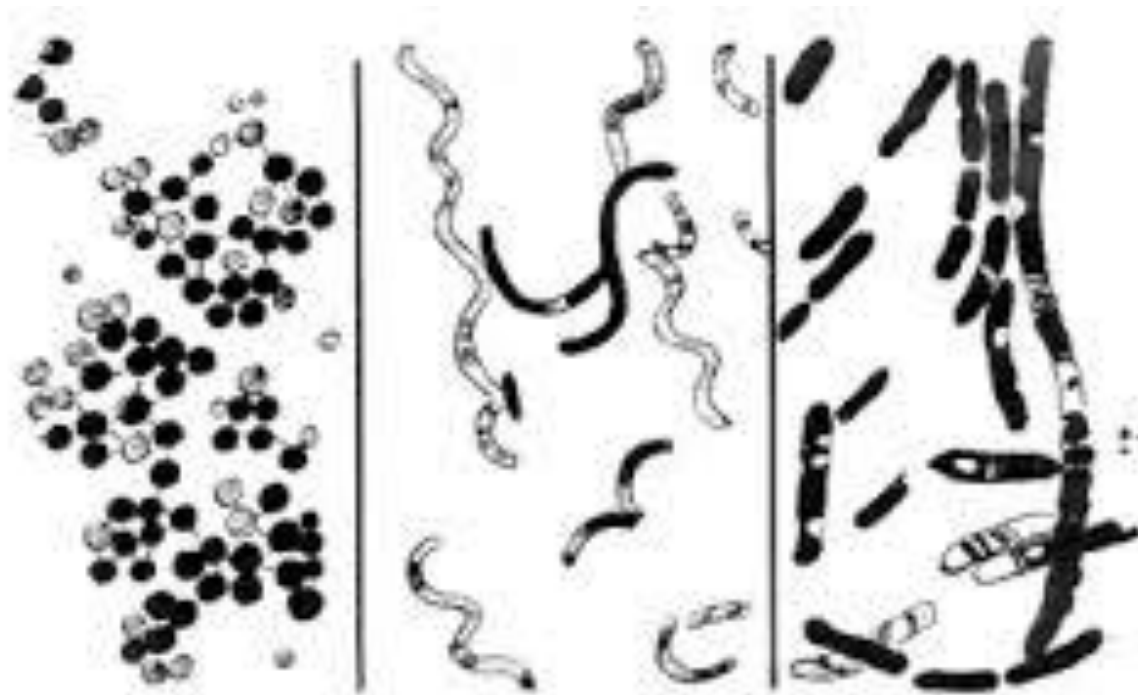
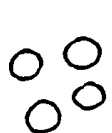


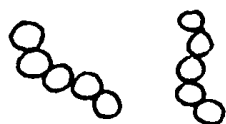
Schéma d'une bactérie



Les bactéries peuvent présenter différentes formes:
 1 - des formes sphériques (coques),
 2 - des formes plus ou moins spirallées,
 3 - des formes allongées ou en bâtonnets (bacilles).



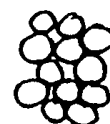
COCCI



COCCI EN CHAINE
(streptocoque)



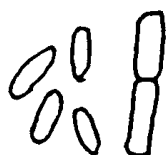
DIPLOCOQUES
(pneumocoque)



COCCI EN AMAS
(staphylocoque)



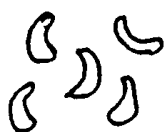
COCCOBACILLE



BACILLE



BACILLE FUSIFORME



VIBRIONS



SPIRILLE



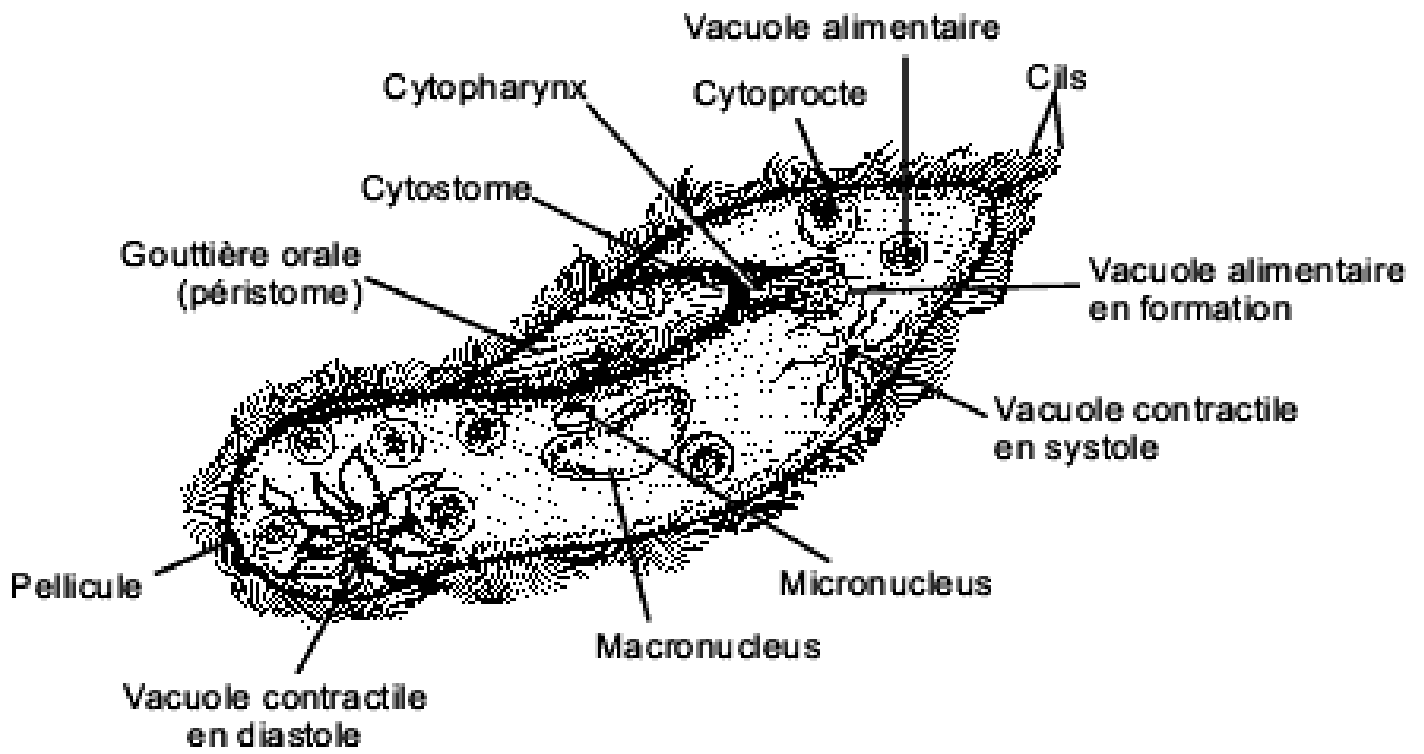
BORRELIA



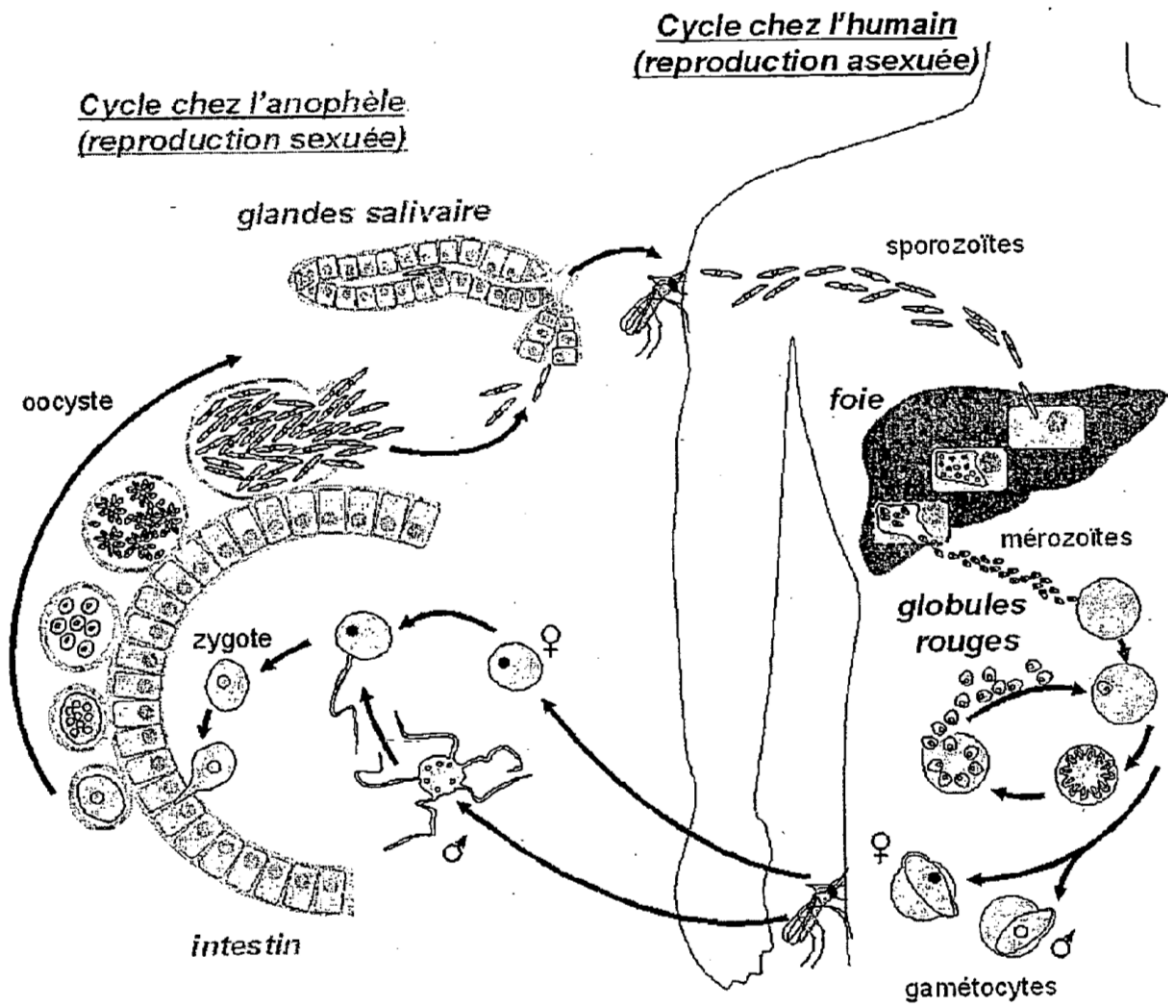
TREPONEME



LEPTOSPIRE



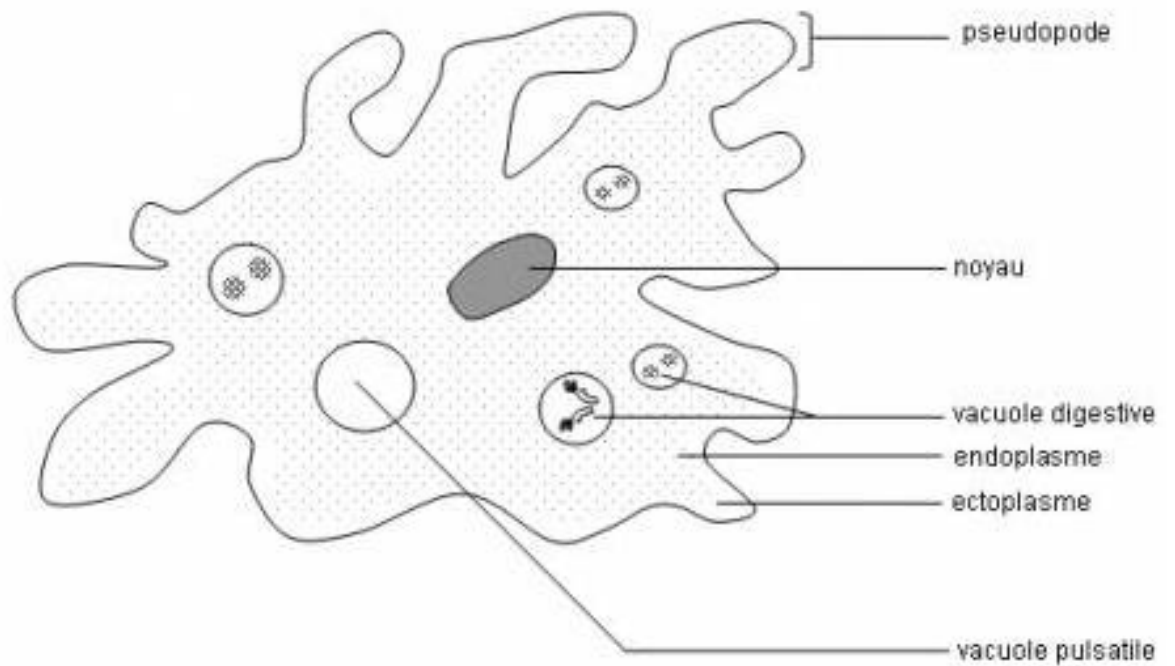
Exemple de protozoaire : Paramécie



Protozoaire, hématozoaire responsable du paludisme : le *Plasmodium*

amibe

animal unicellulaire, vivant dans l'eau douce ou salée, se déplaçant à l'aide de ses pseudopodes
taille de 200 μm à 500 μm (extrêmes : de 20 μm à 1 mm de longueur)

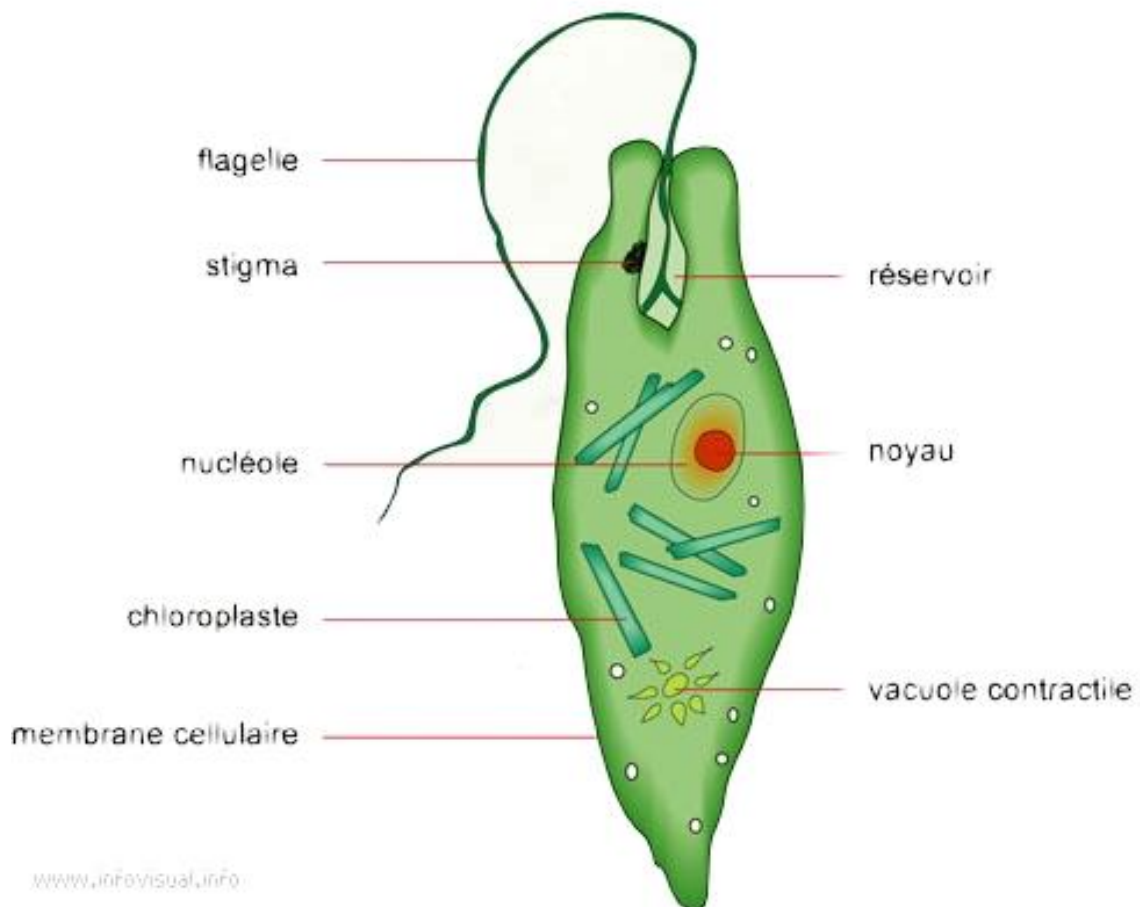


Exemple de protozoaire : amibe

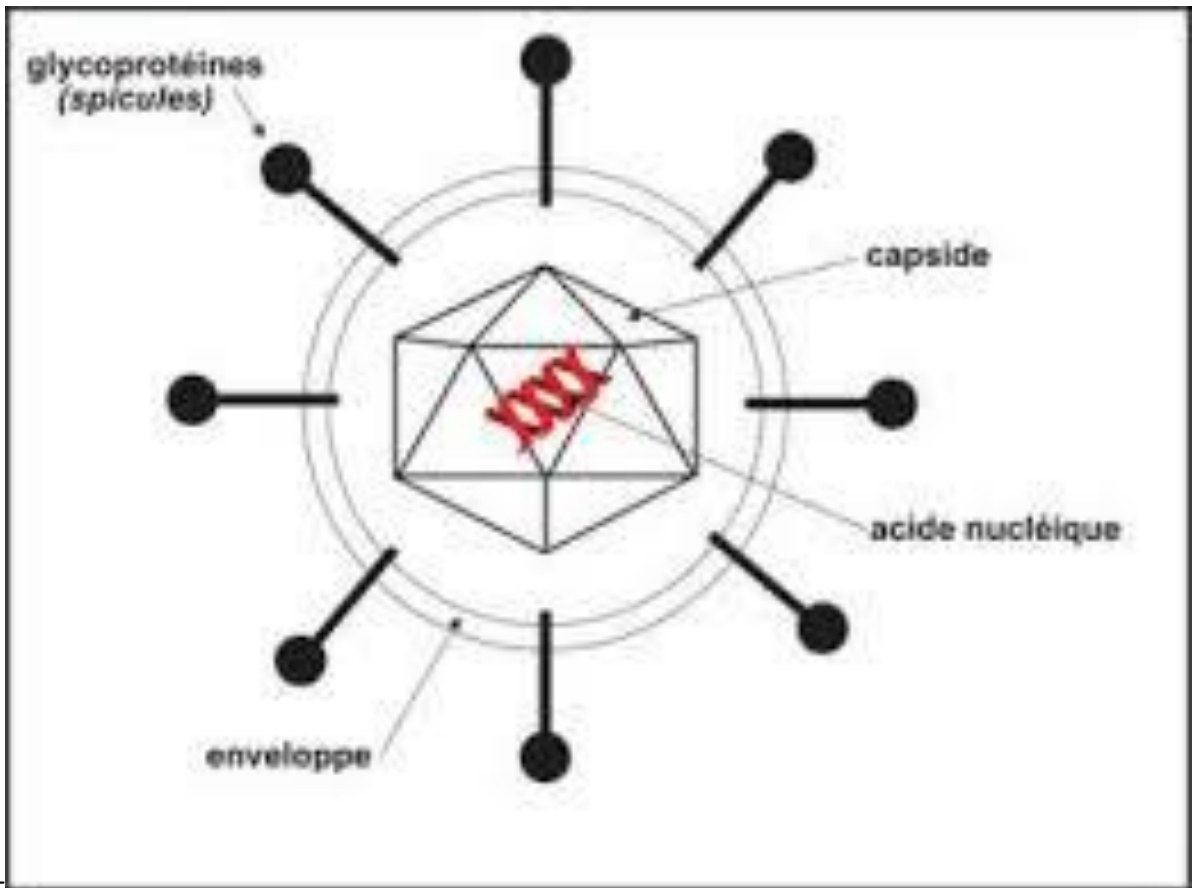


Exemple de protozoaire : l'amibe

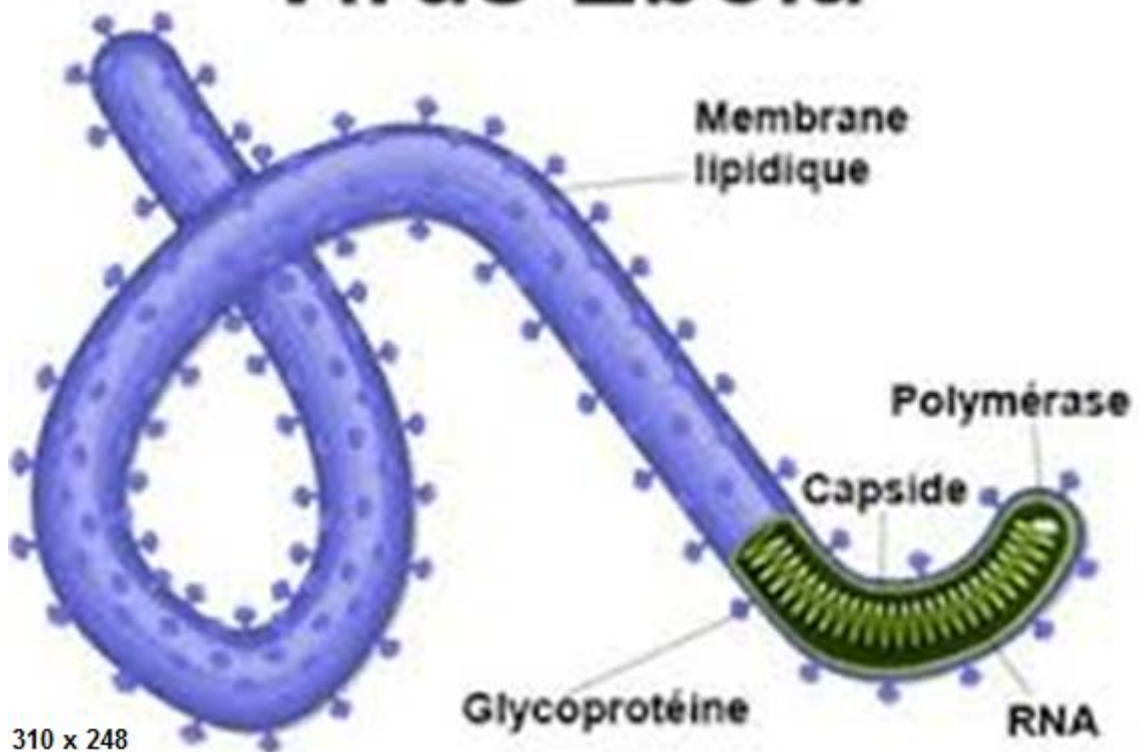
STRUCTURE D'UNE EUGLÈNE



Exemple de protophyte : Euglène : algue unicellulaire :

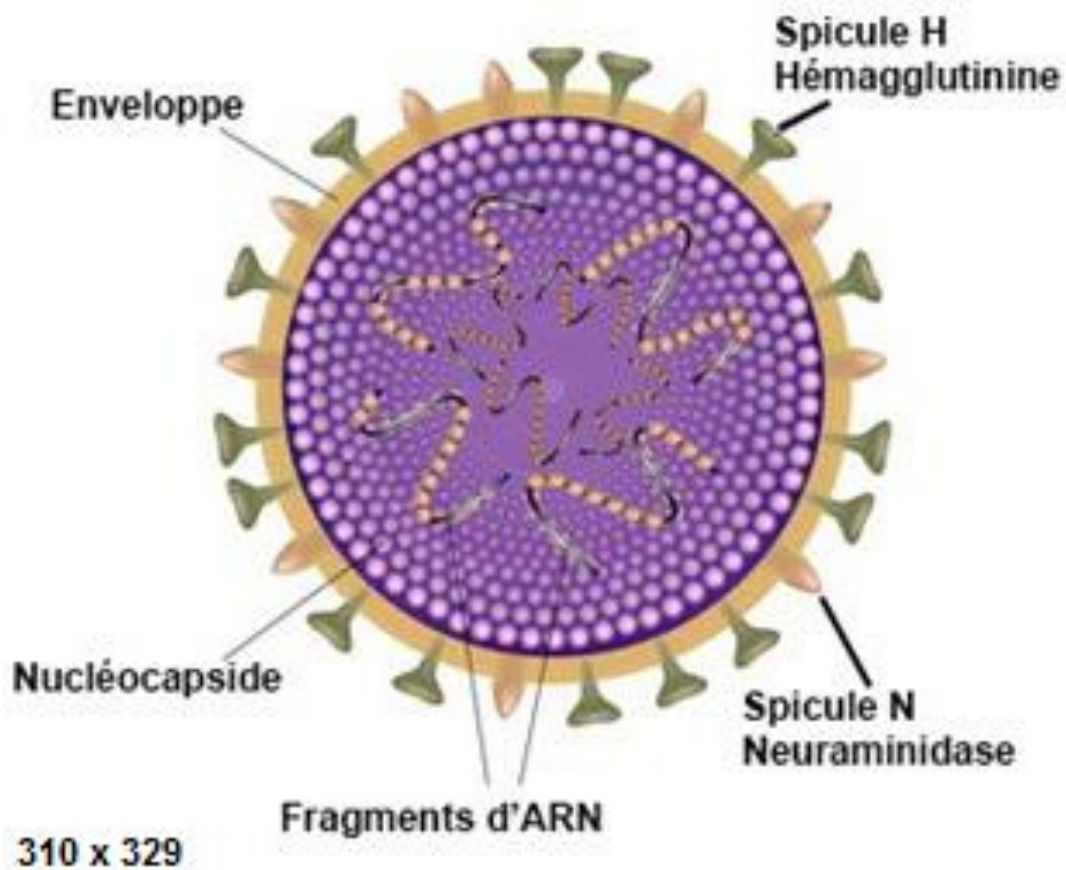


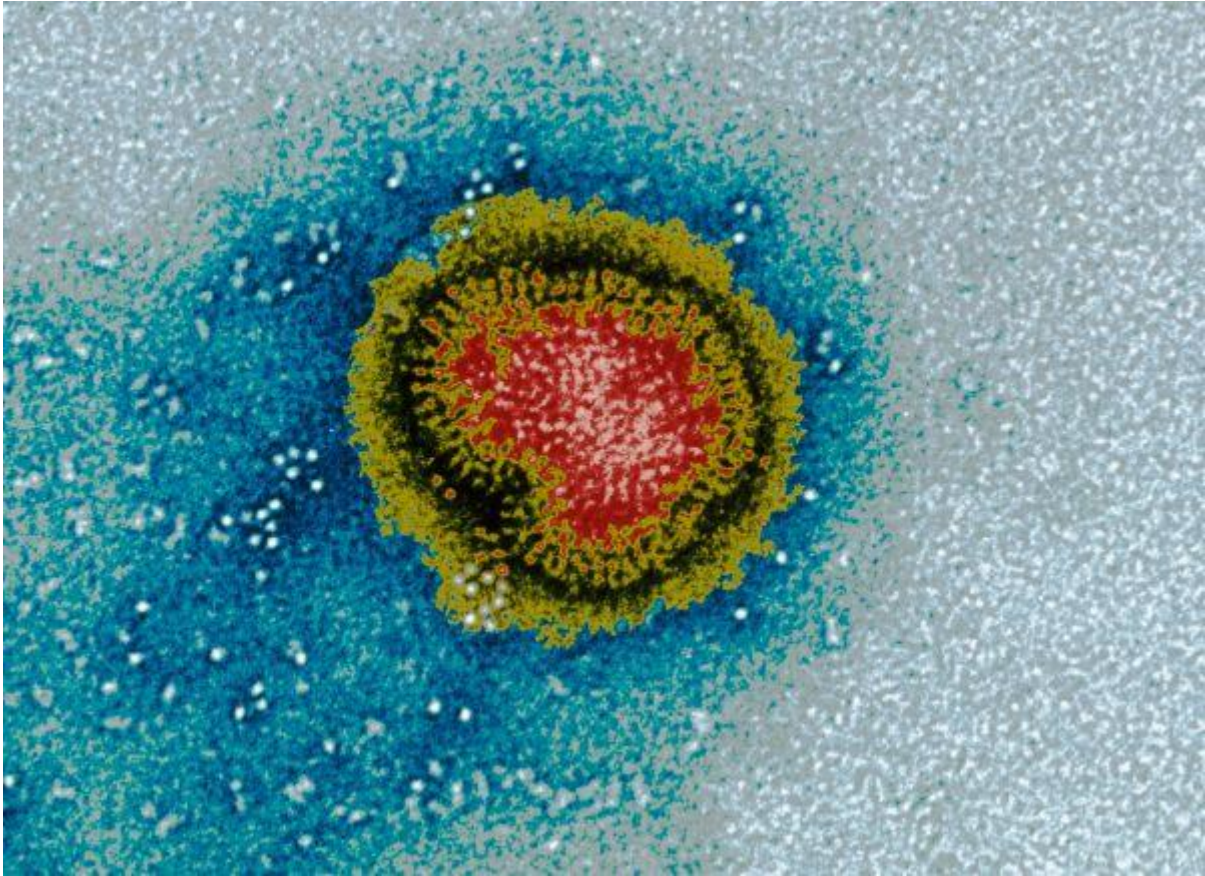
Virus Ebola



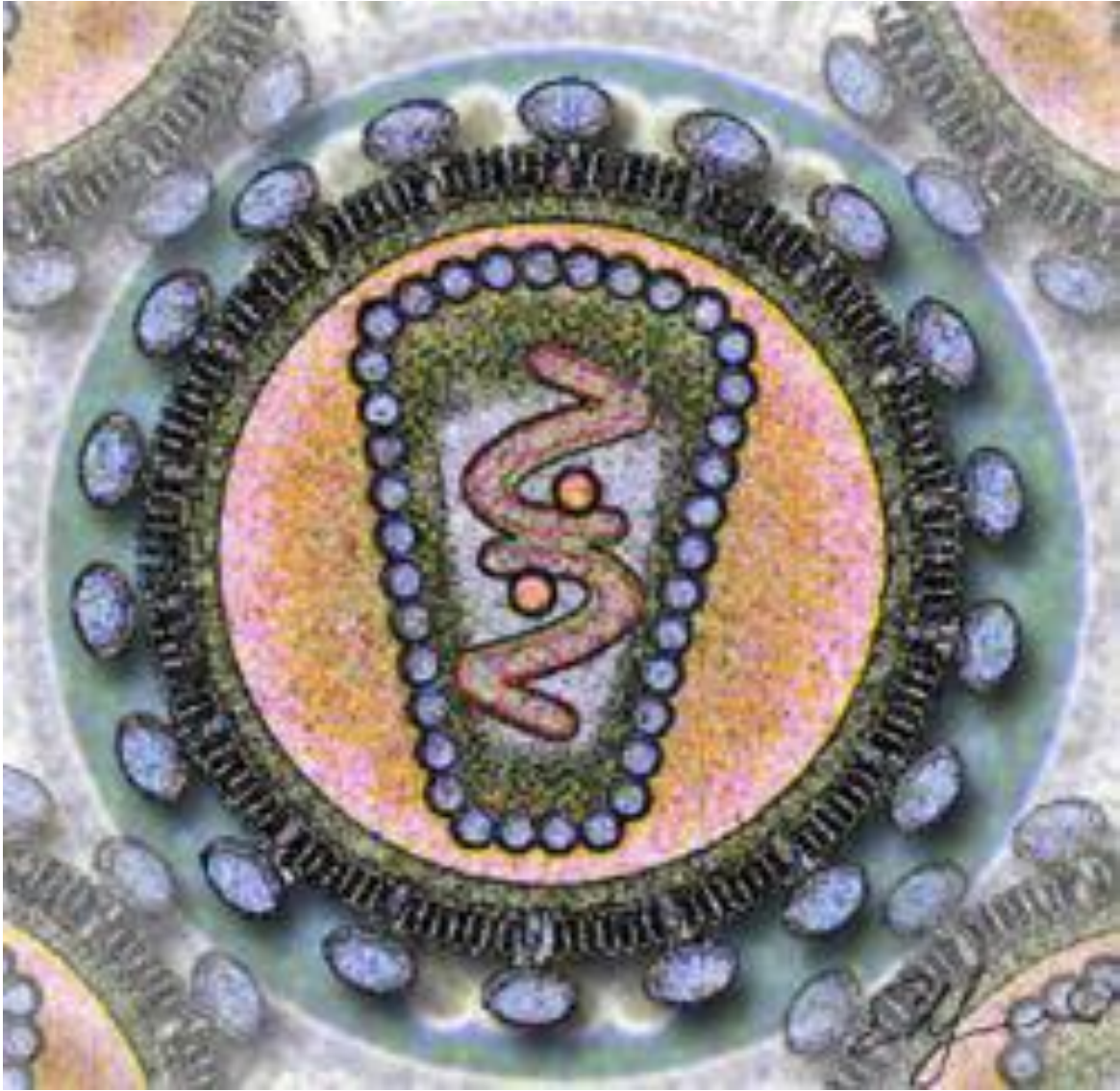
310 x 248

Virus de la grippe

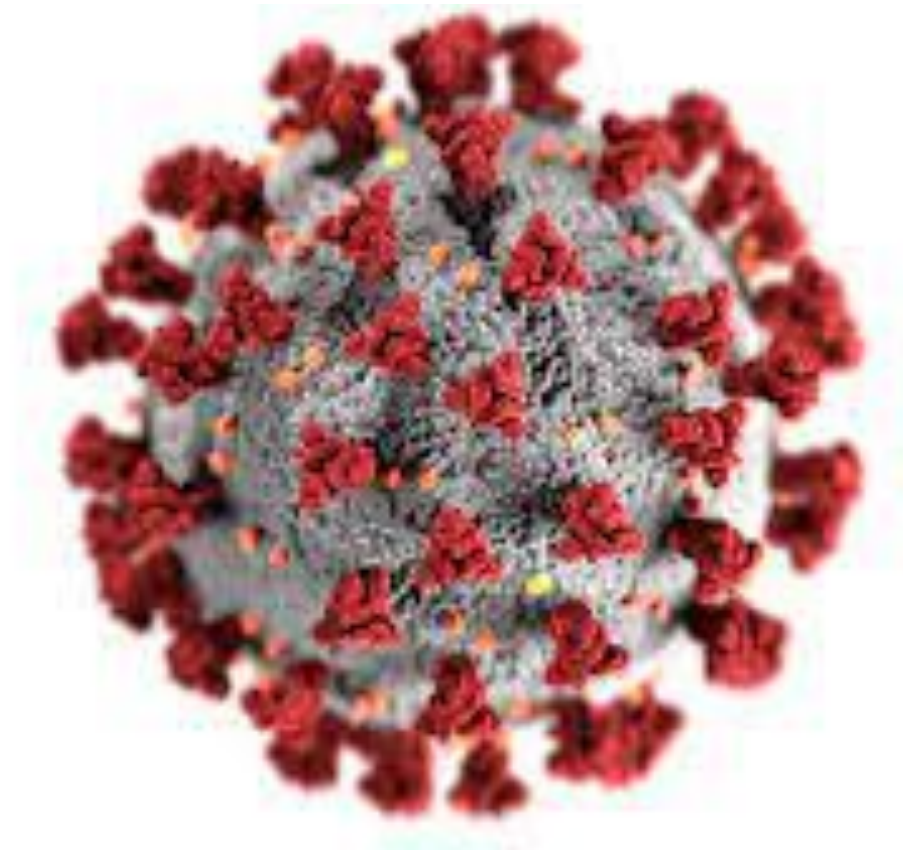




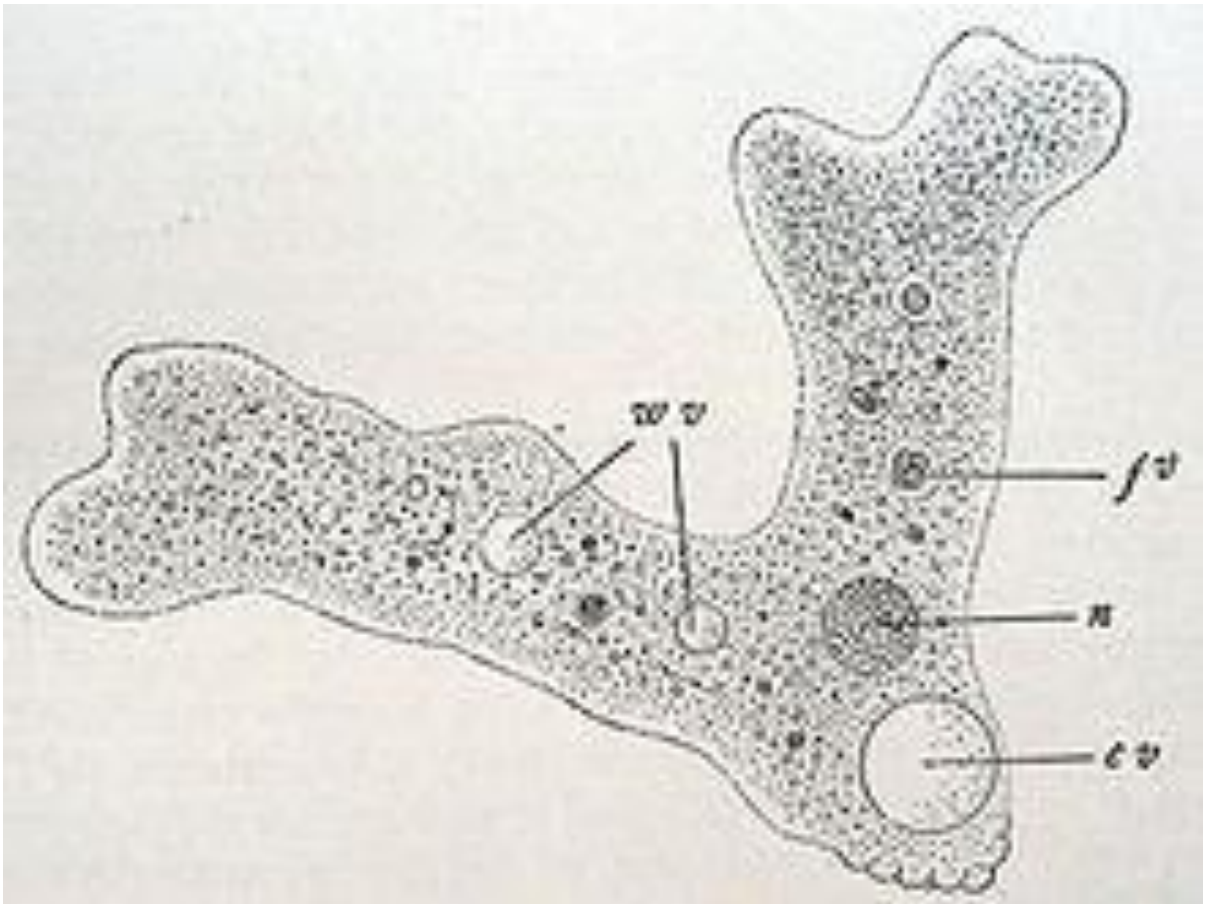
Virus de la grippe



Virus de l'immunodéficience humaine : VIH



Corona virus



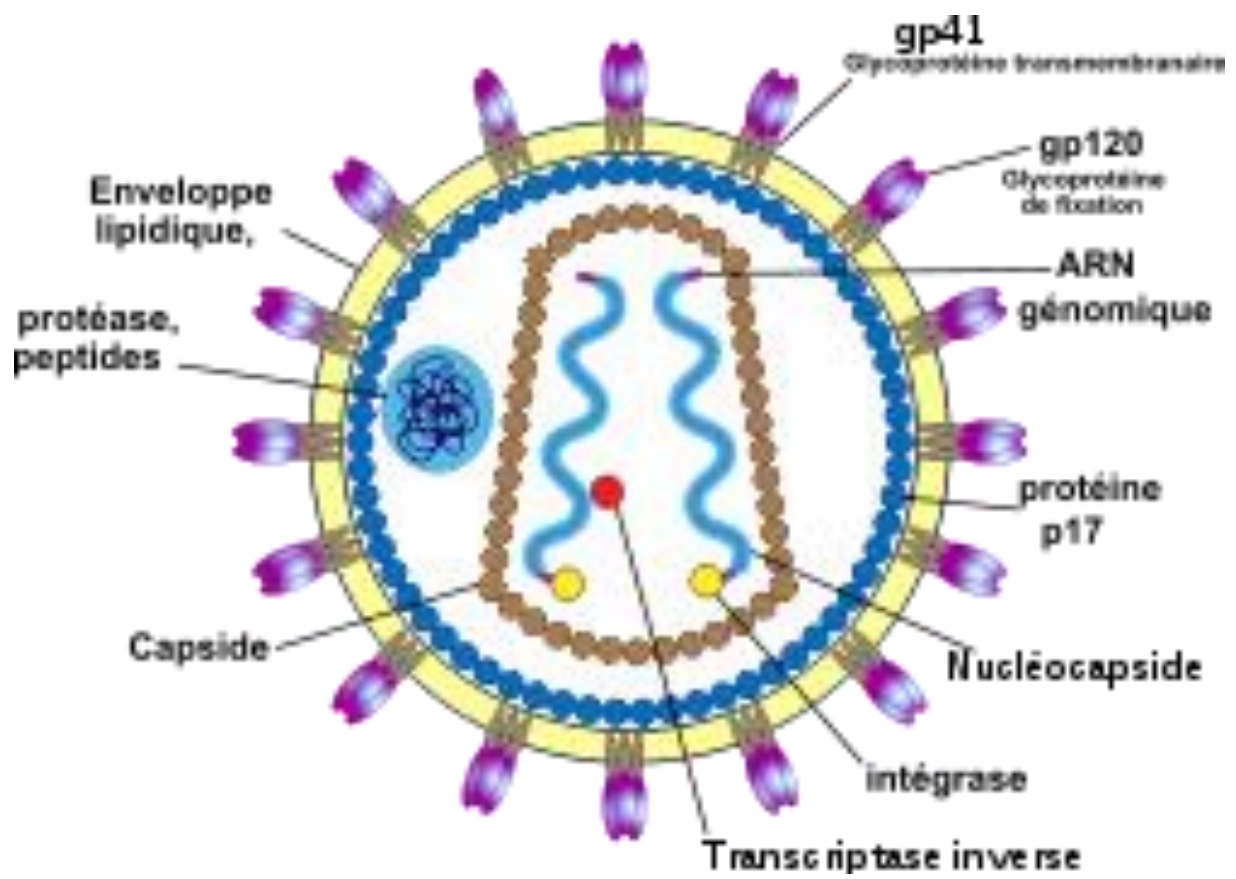
290 x 217

Schéma d'une amibe

510 x 397

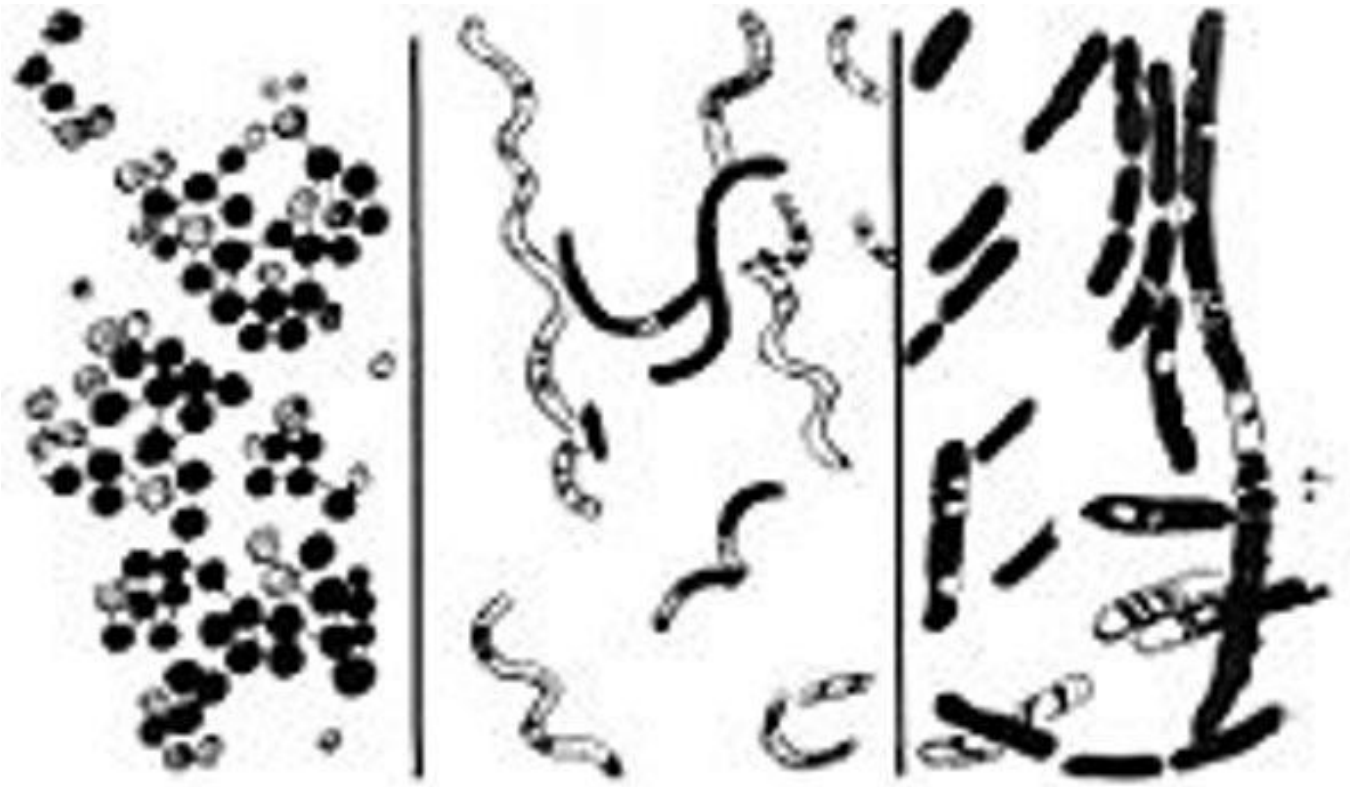


Schéma d'une algue

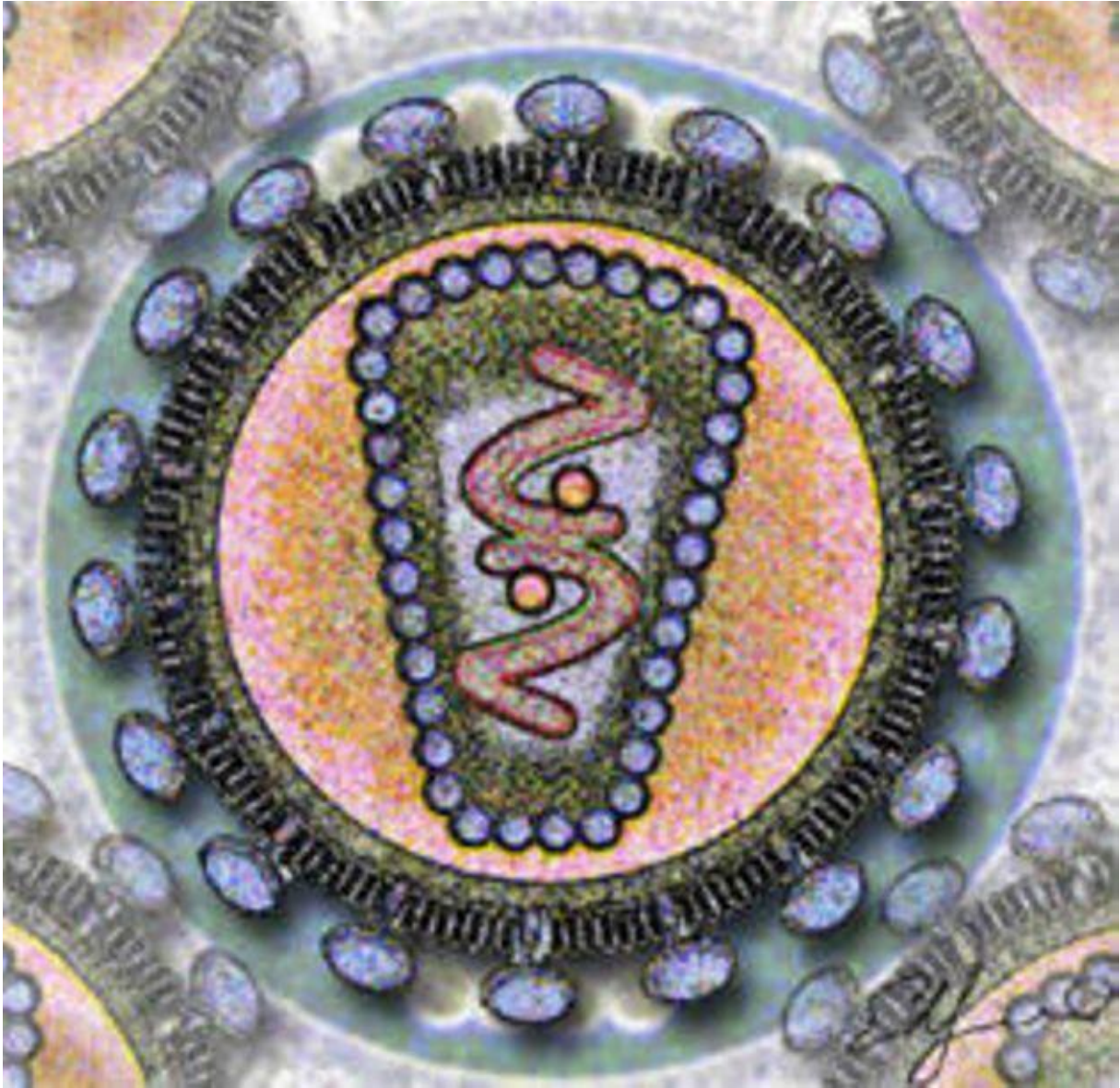


VIH

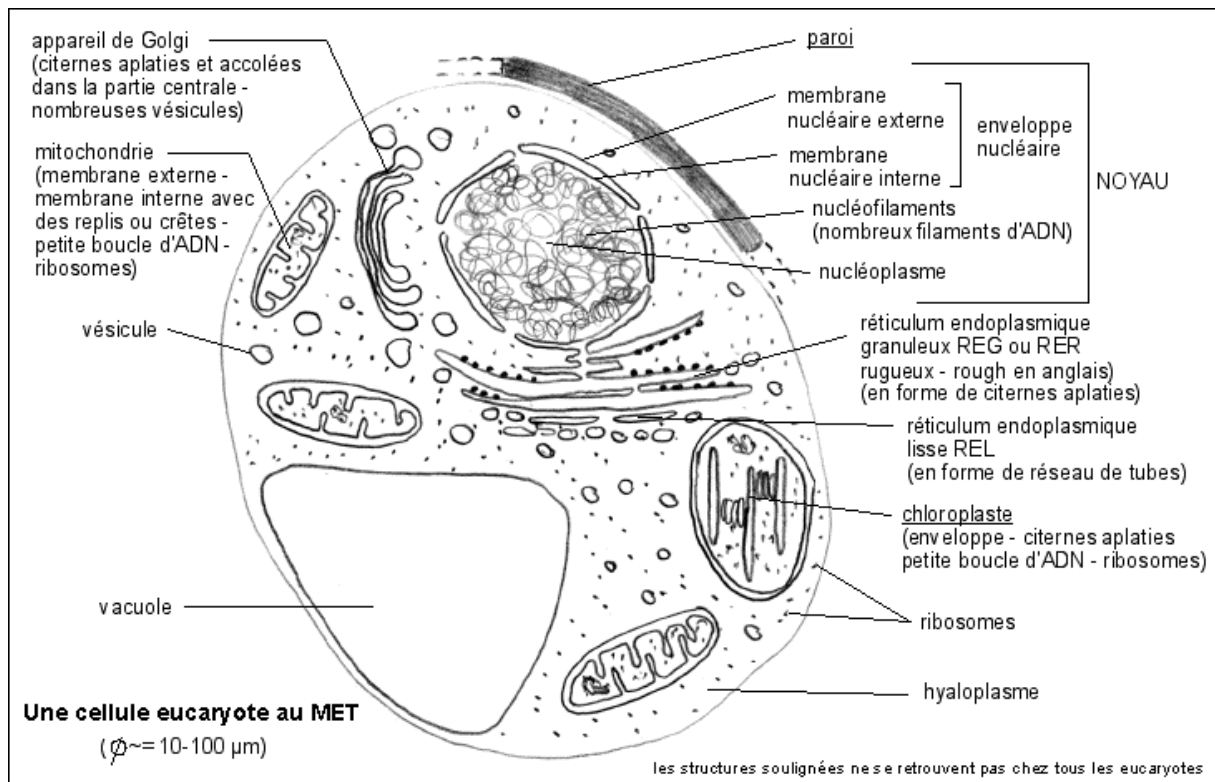
EVALUATION



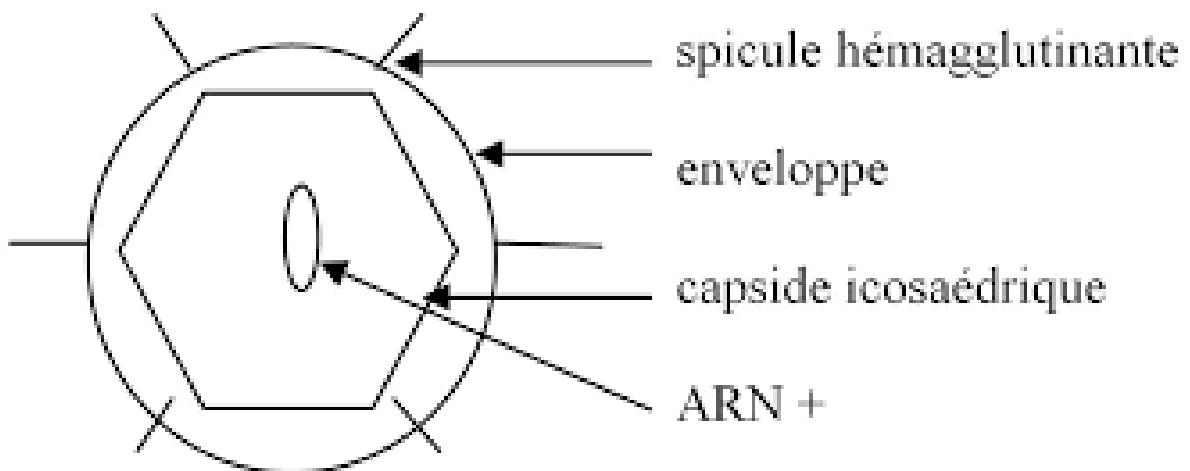
Diversité des bactéries ?



?



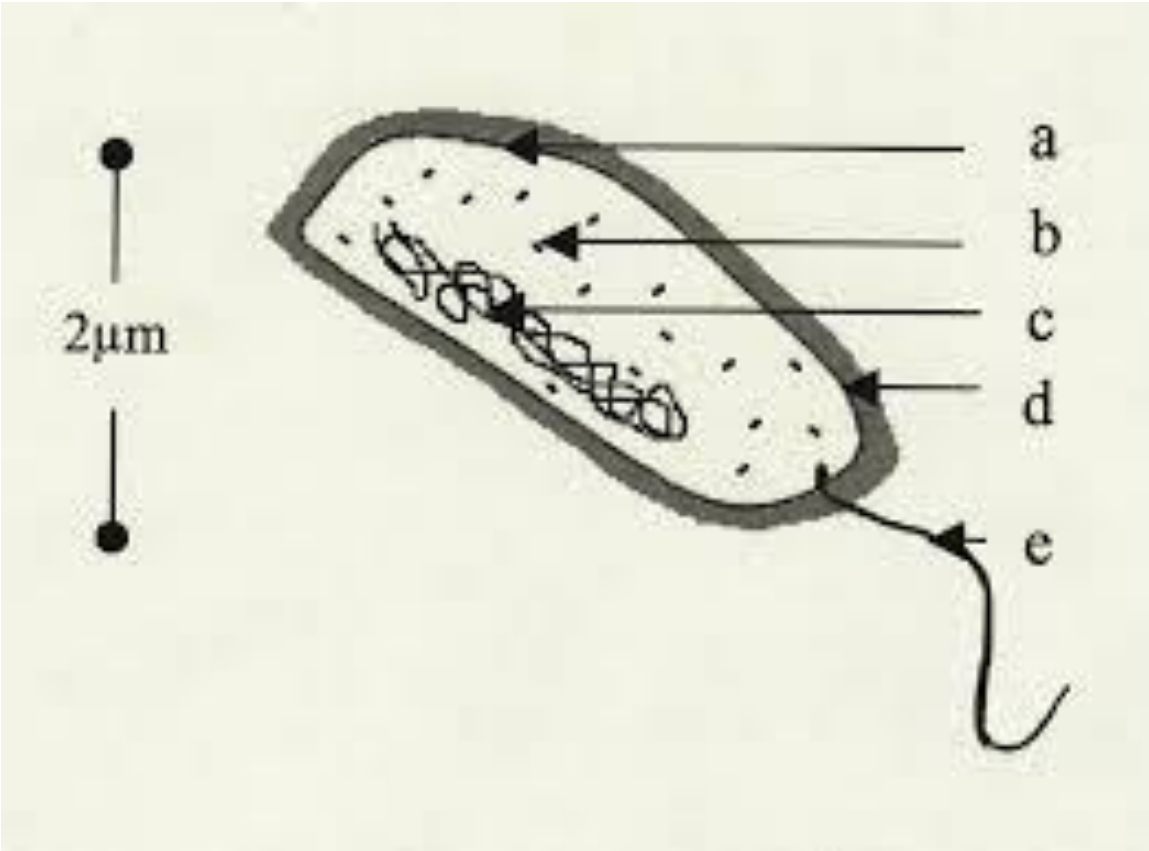
?



?

A.....

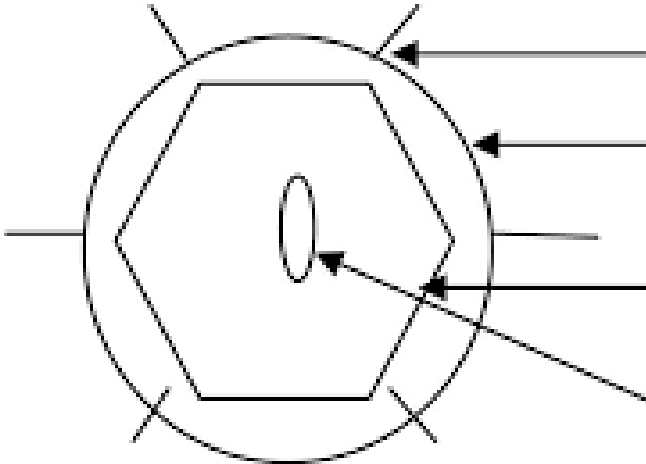
EVALUATION



?

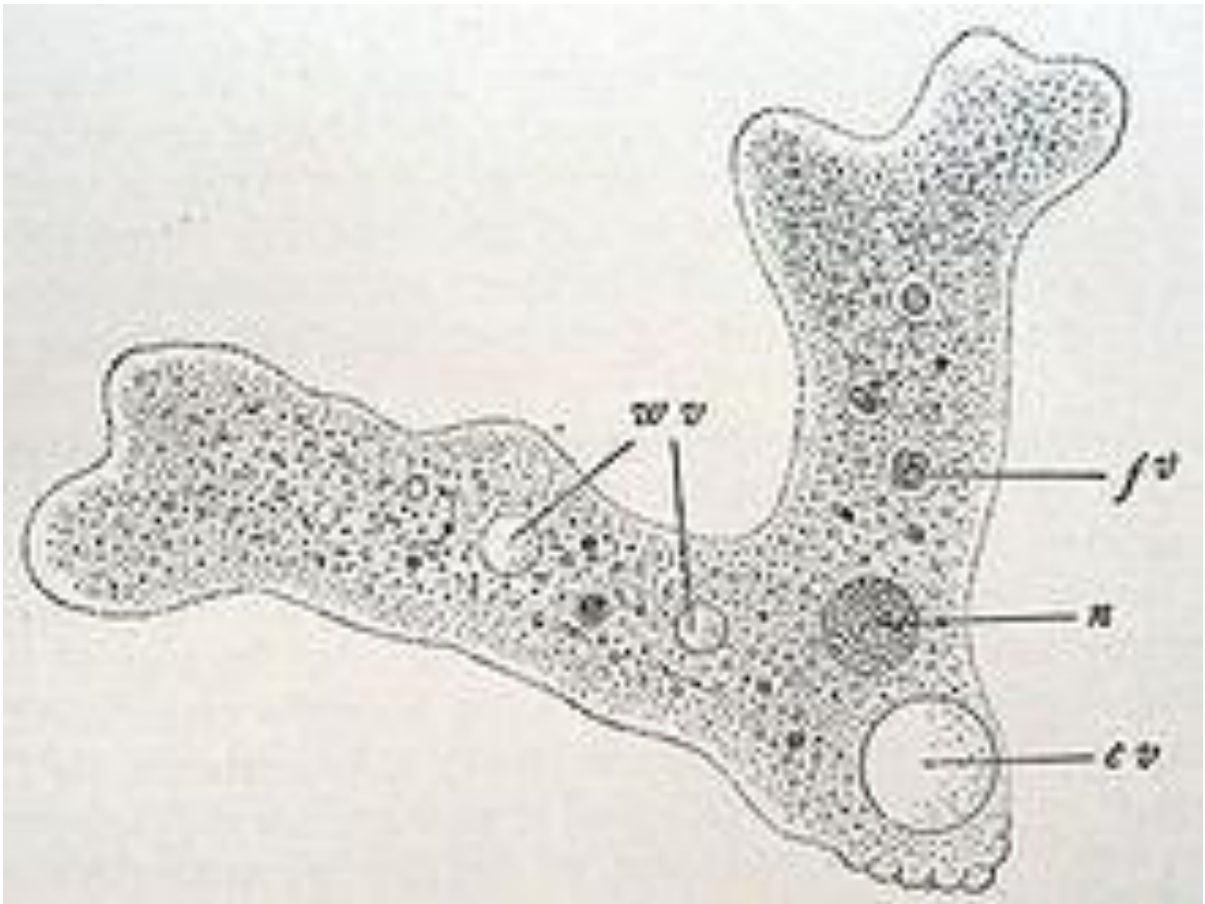
1016 X 752

B



?

1196 x 529



C

?